

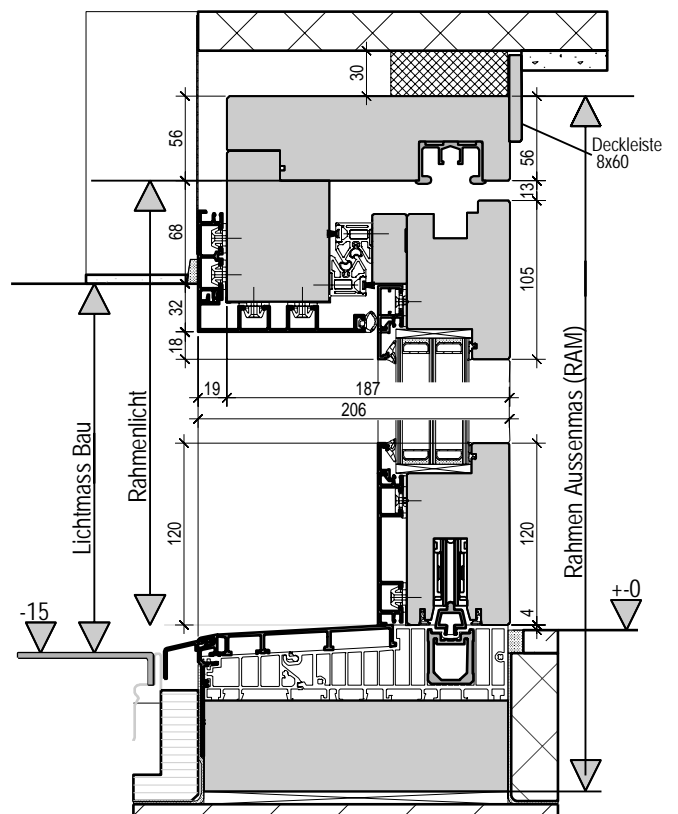
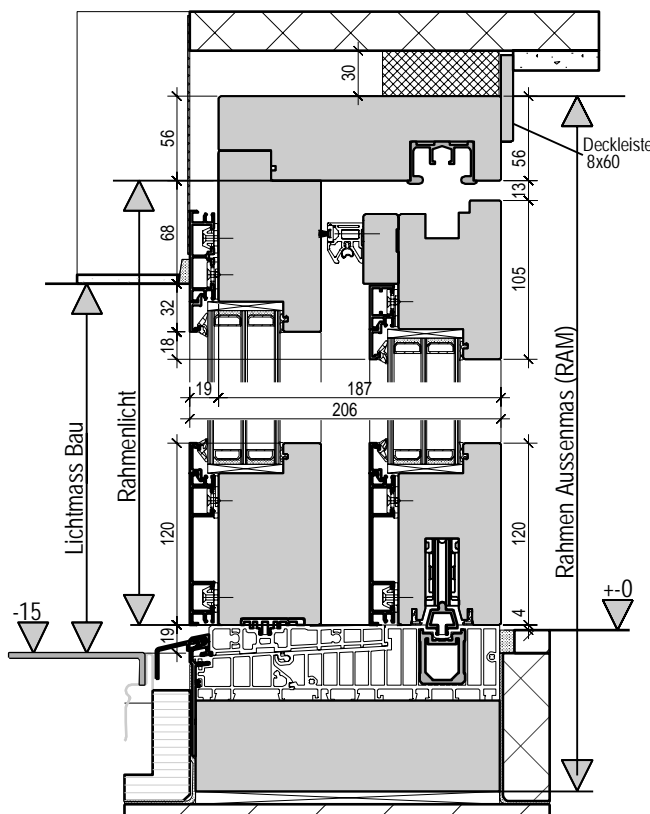
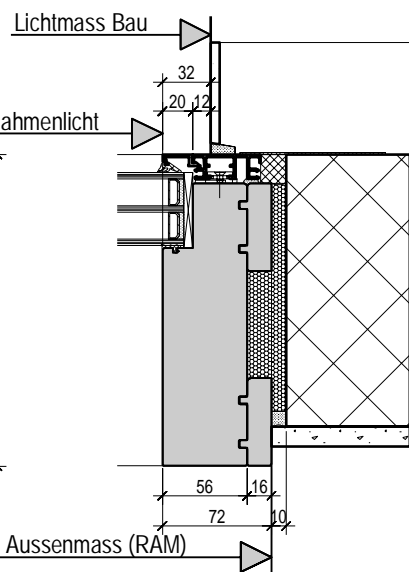
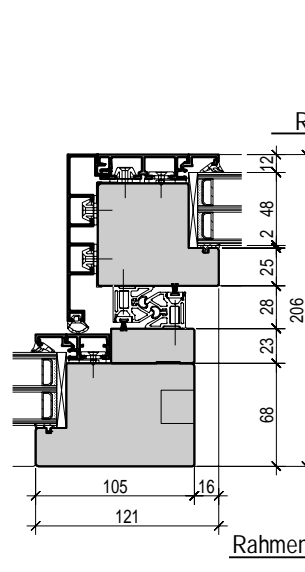
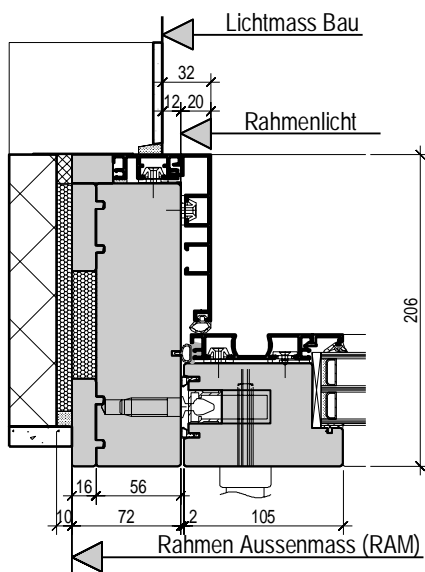
S-Line Holz-Metall, HST

Ausführung:

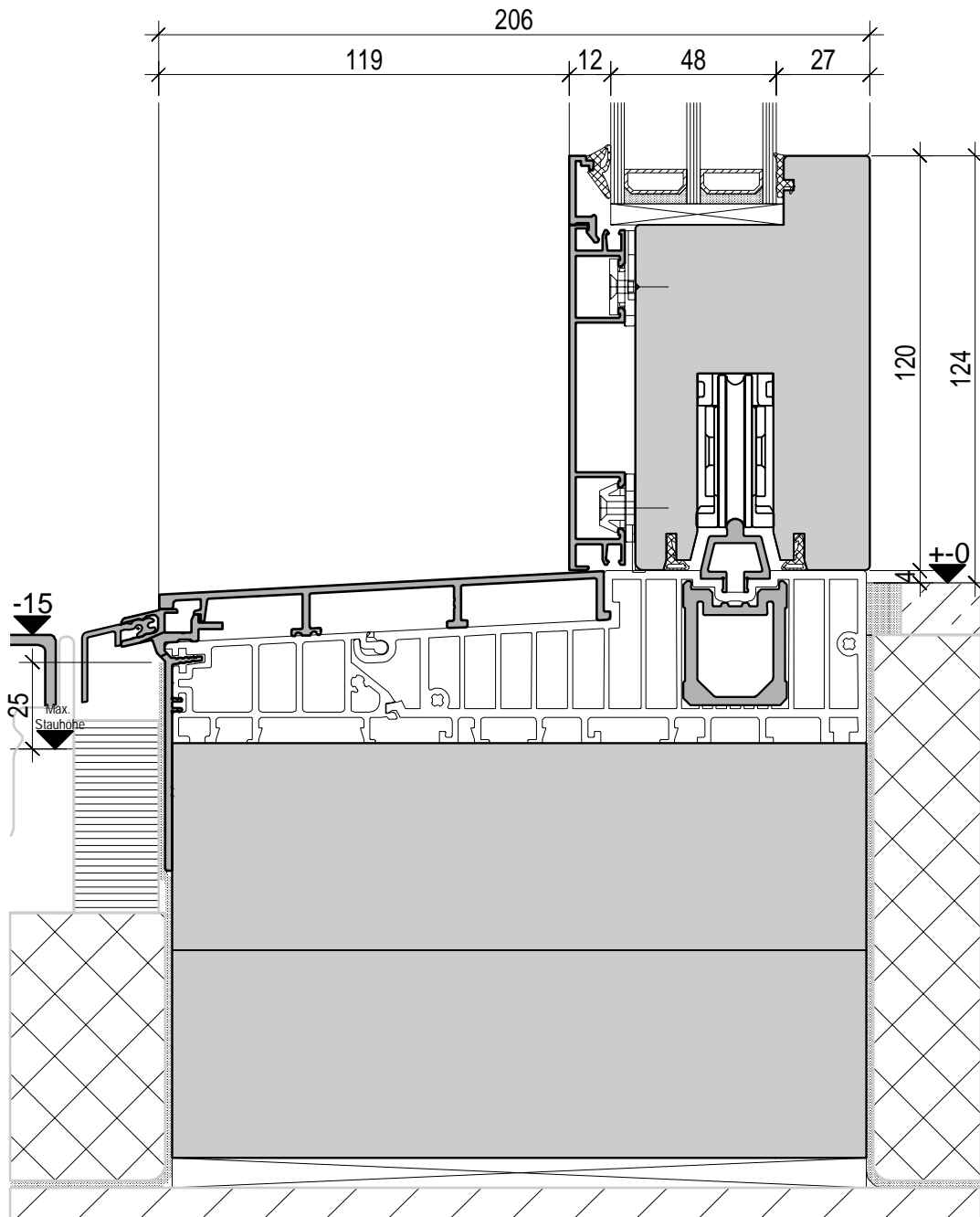
Tiefe Holzfutter	187mm
Einbautiefe Futter	206mm
Dicke Flügelholz	68mm
Glasstärke Flügel	48mm
Glasstärke Festteil	48mm
Glaswange Aussen/Innen	gerade/gerade
Eckverbindung Futter	mit Fuge
Eckverbindung Flügel	mit Fuge
Mittelpartie	105mm
Festteil unten	mit Einleimer 120mm
Festteil oben	mit Einleimer 113mm
Festteil seitlich	ohne Einleimer (in das Futter verglast)

Varianten:

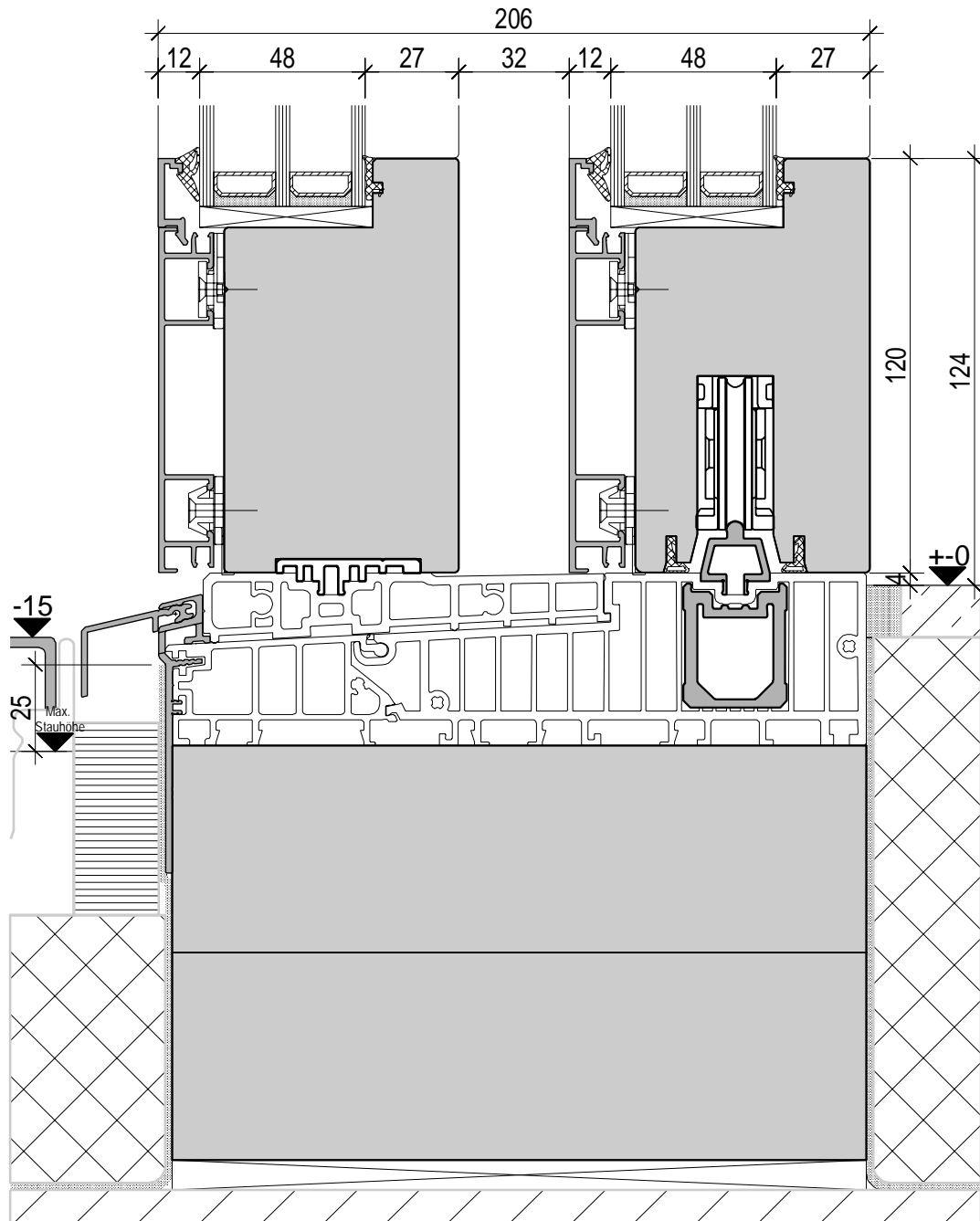
Glasstärke Flügel	38-63mm
Glasstärke Festteil	38-63mm
Glasstärke Flügel	38-63mm
Glasstärke Festteil	38-63mm
Festteil unten	ohne Einleimer (in die Schwelle verglast)
Festteil oben	ohne Einleimer (in das Futter verglast)
Festteil seitlich	mit Einleimer 105mm



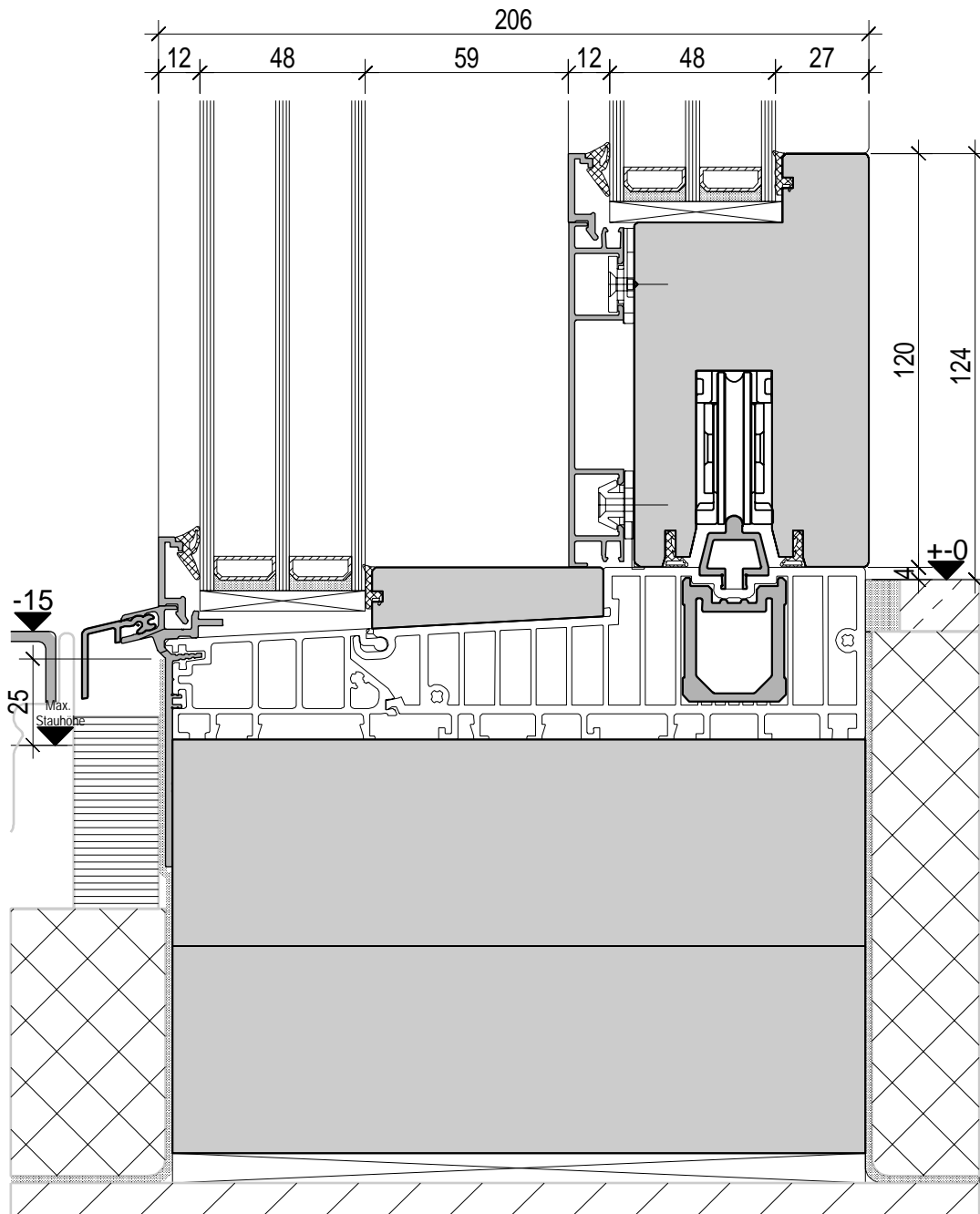
S-Line Holz-Metall, HST



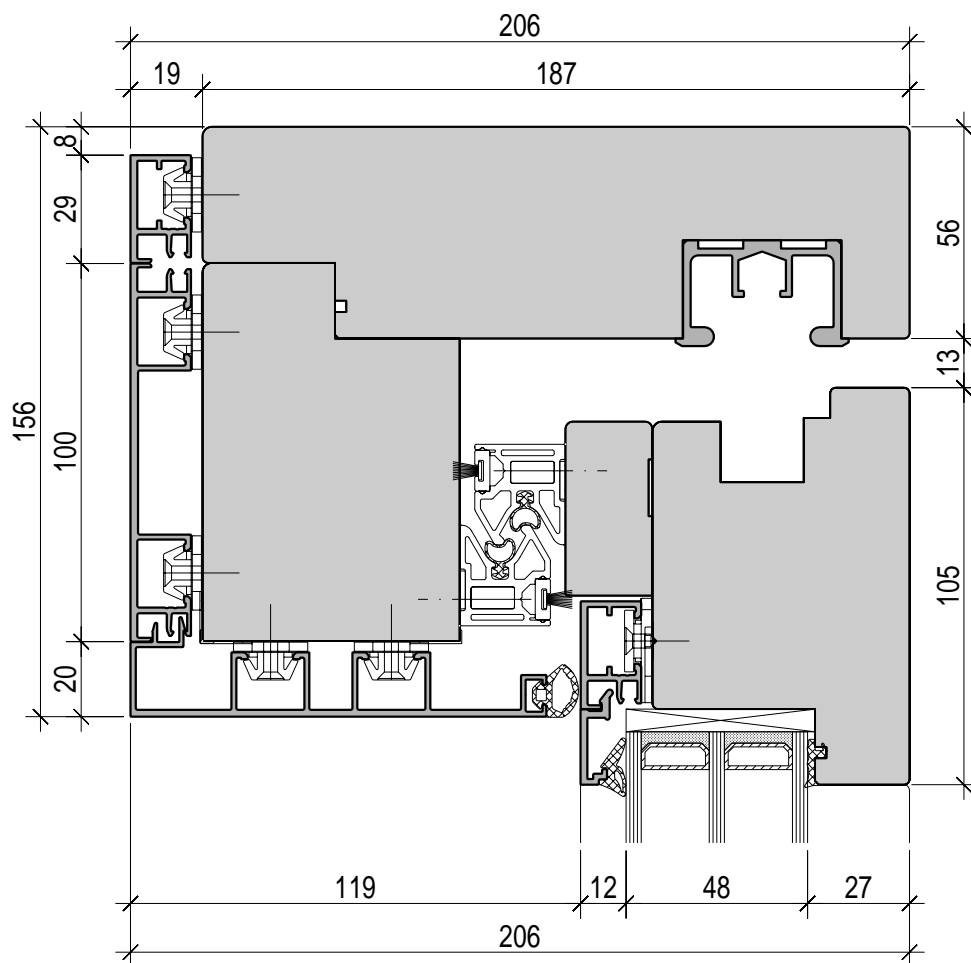
S-Line Holz-Metall, HST

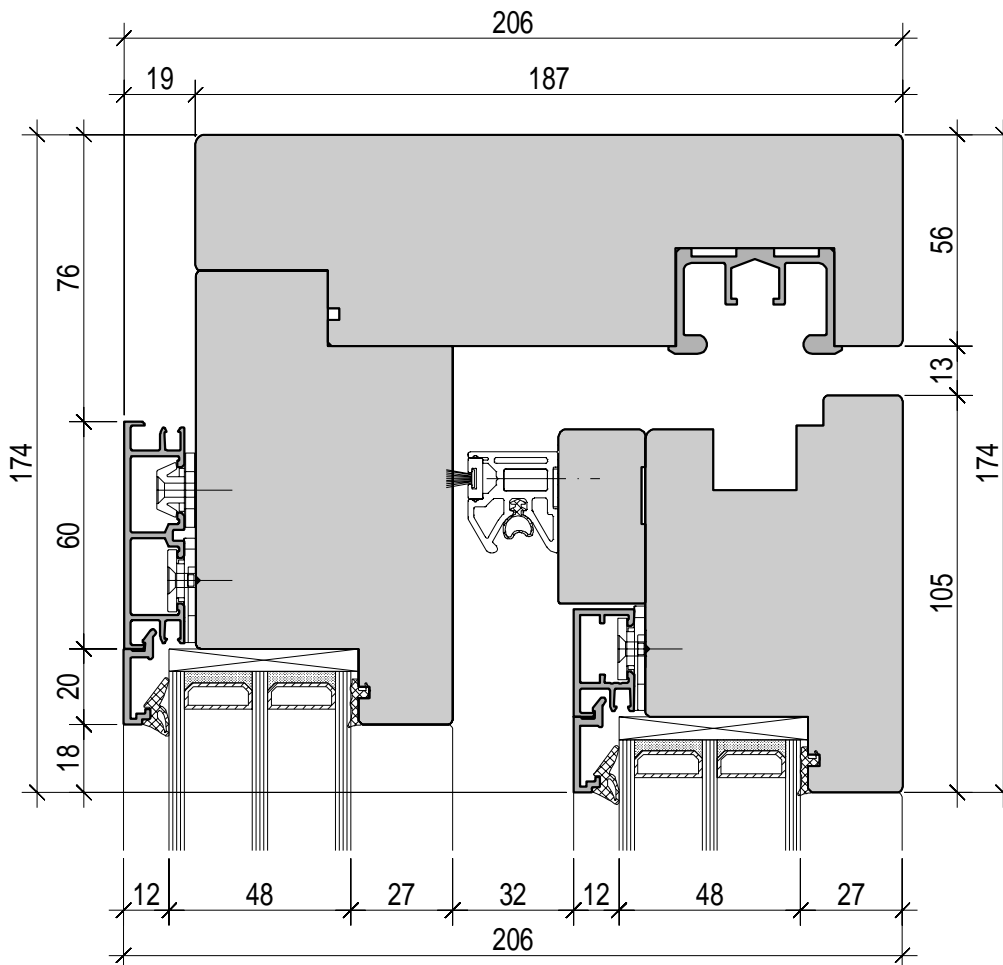


S-Line Holz-Metall, HST

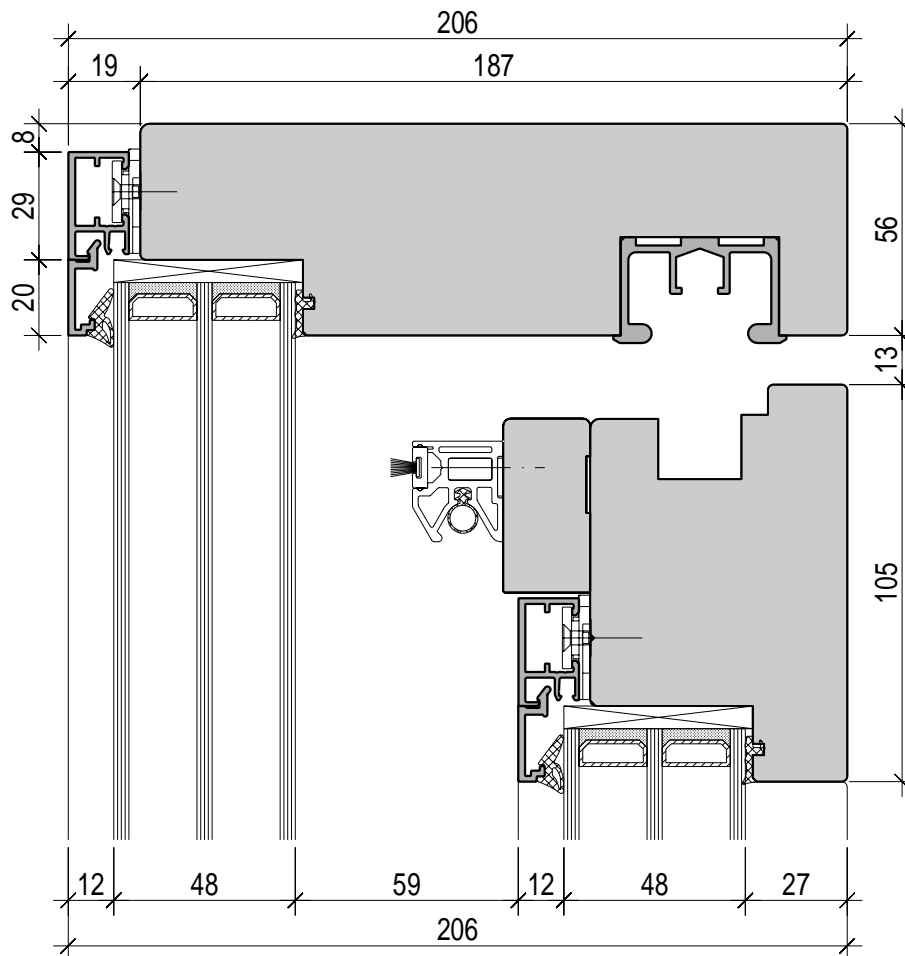


S-Line Holz-Metall, HST

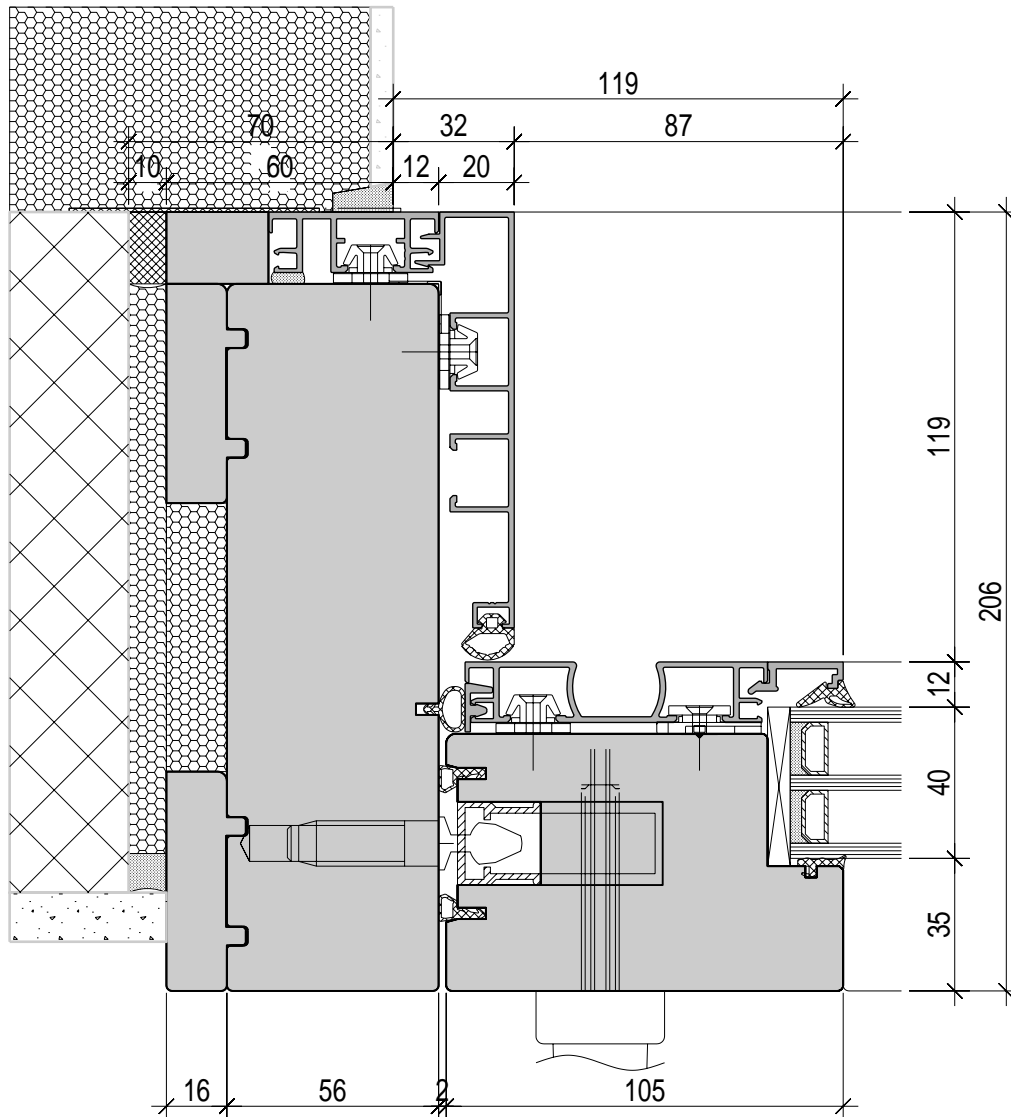




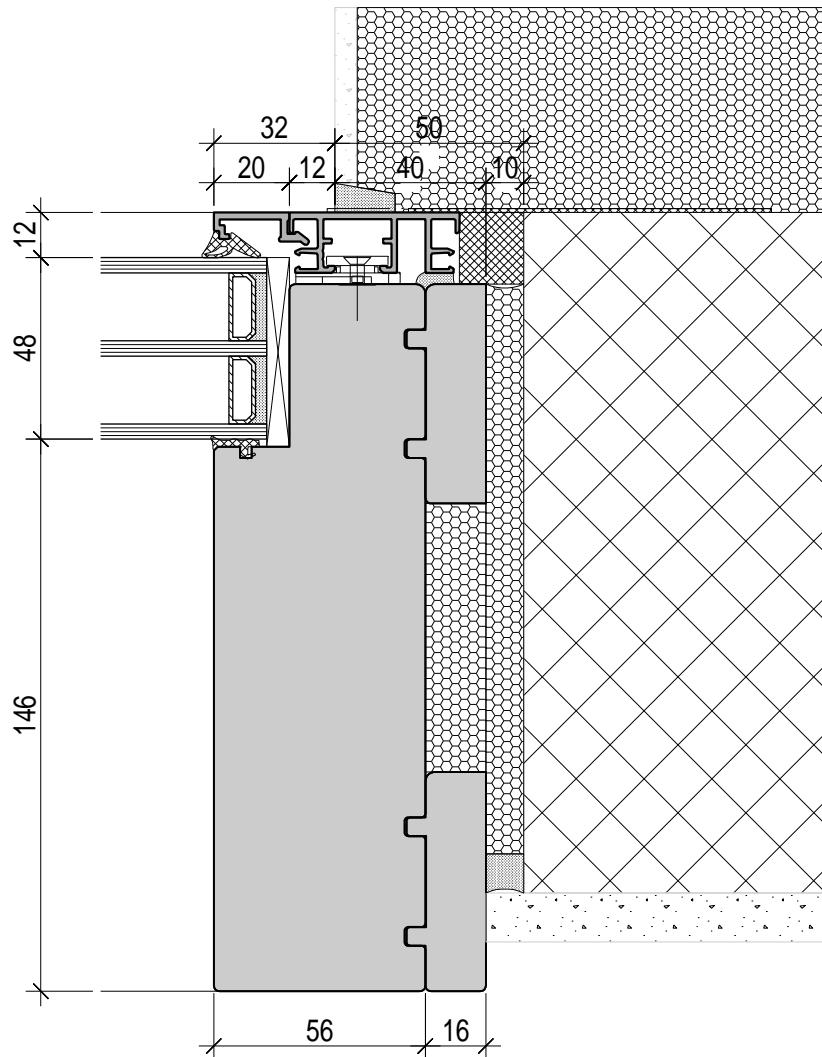
S-Line Holz-Metall, HST



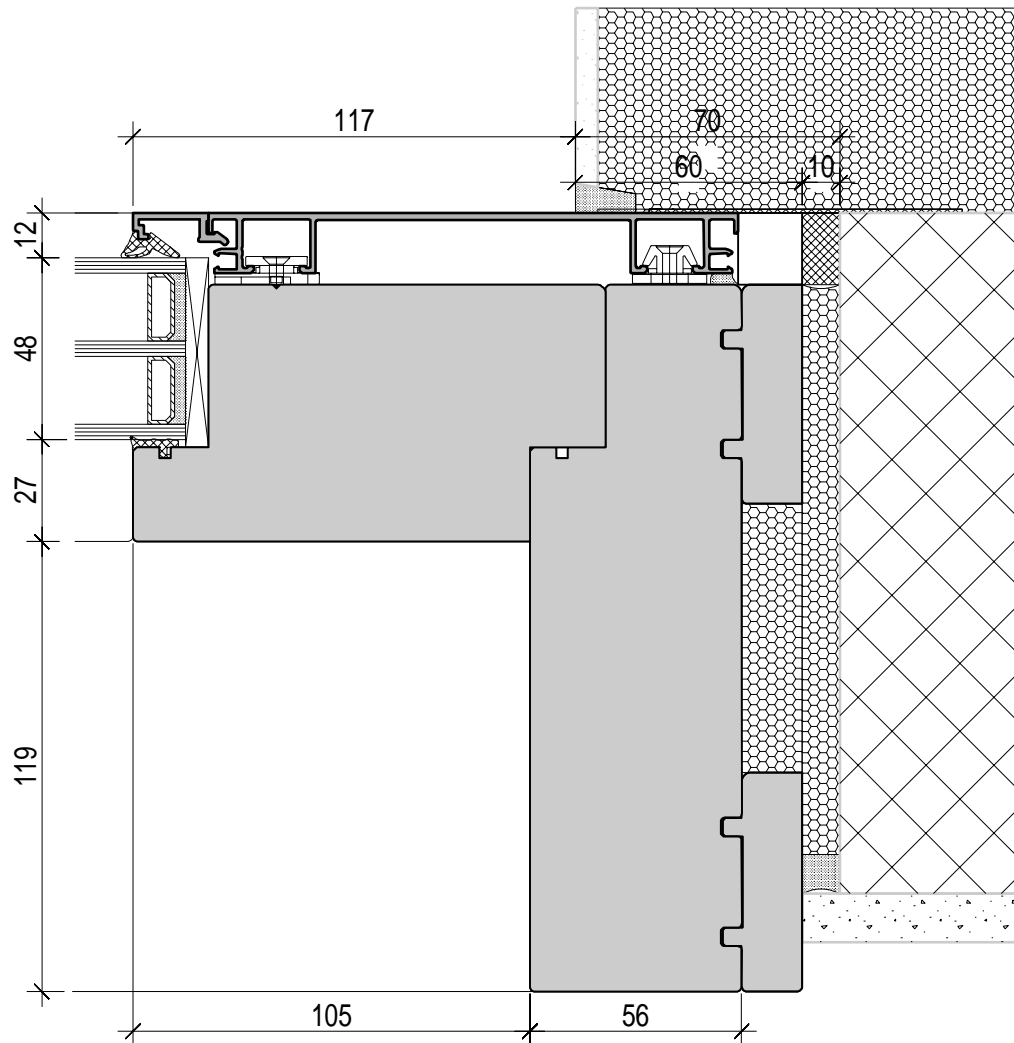
S-Line Holz-Metall, HST



S-Line Holz-Metall, HST



S-Line Holz-Metall, HST



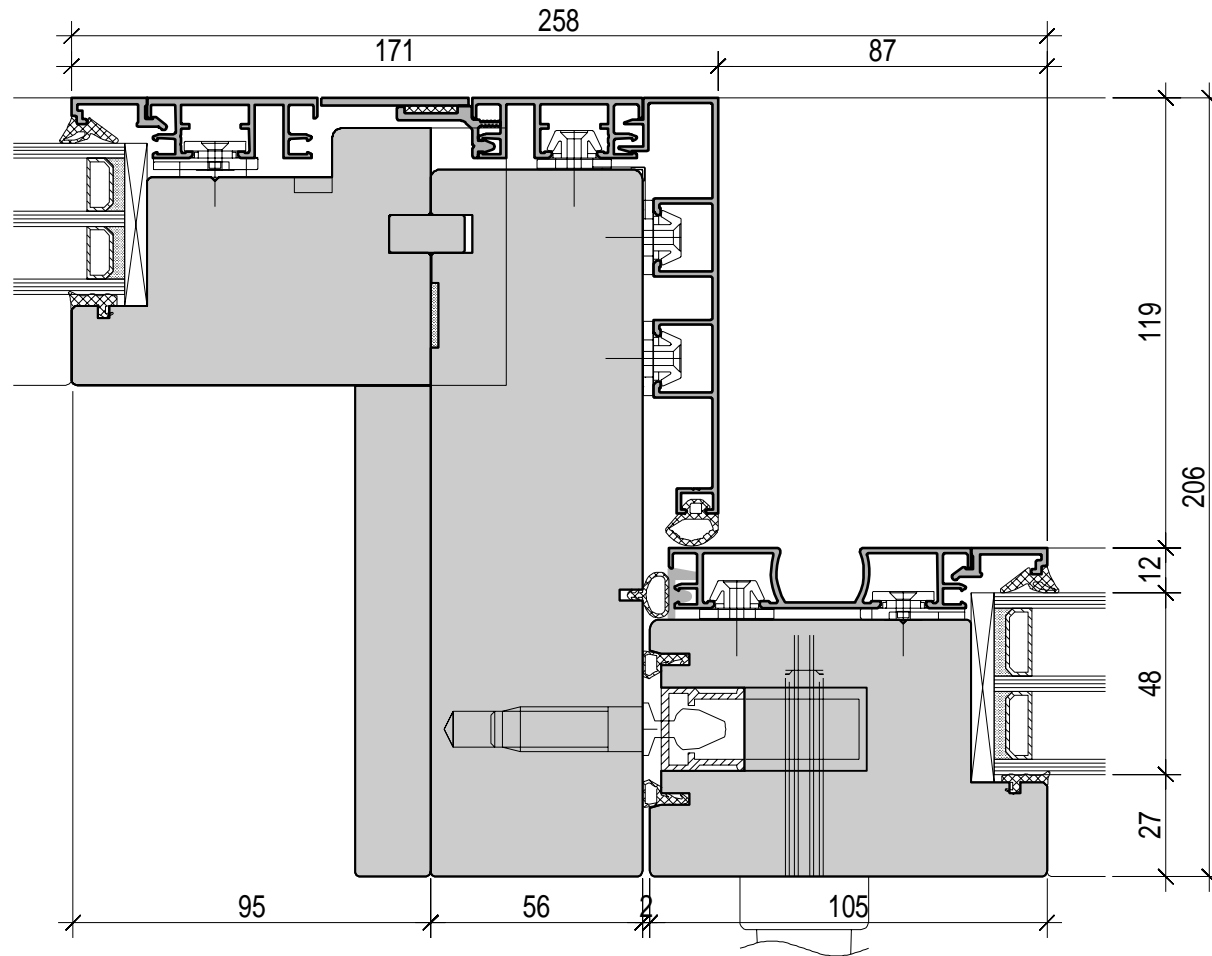
SV-HST-F-187

Detail seitlich

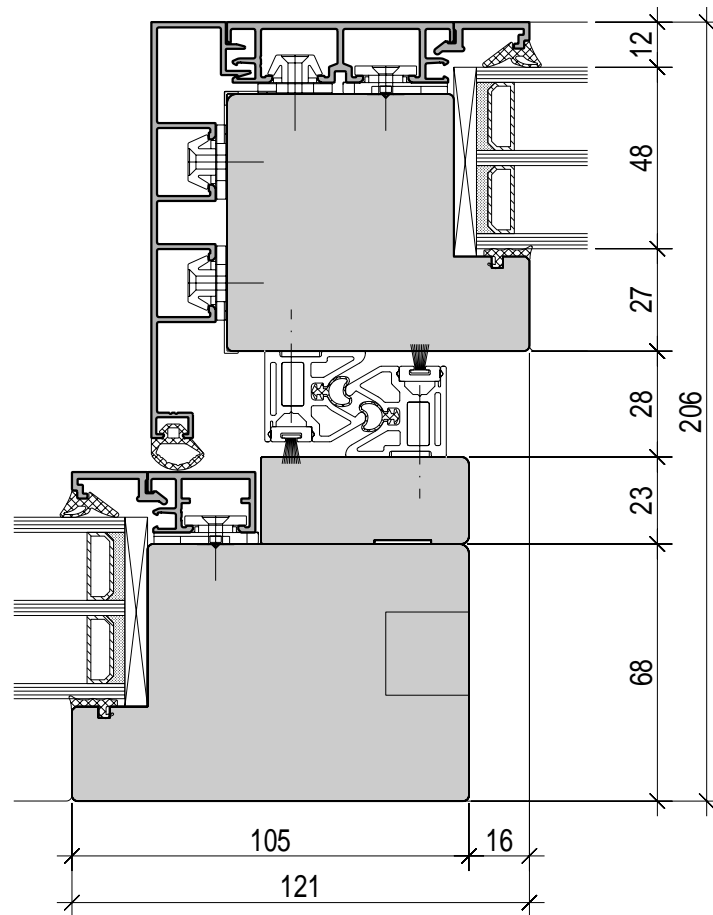
Zeich. 3 110 1111

Mst. 1:2

Datum. 10.12.2015



S-Line Holz-Metall, HST



S-Line Holz-Metall, HST

